

# מרחב תכנון מקומי מעלה - אדומים

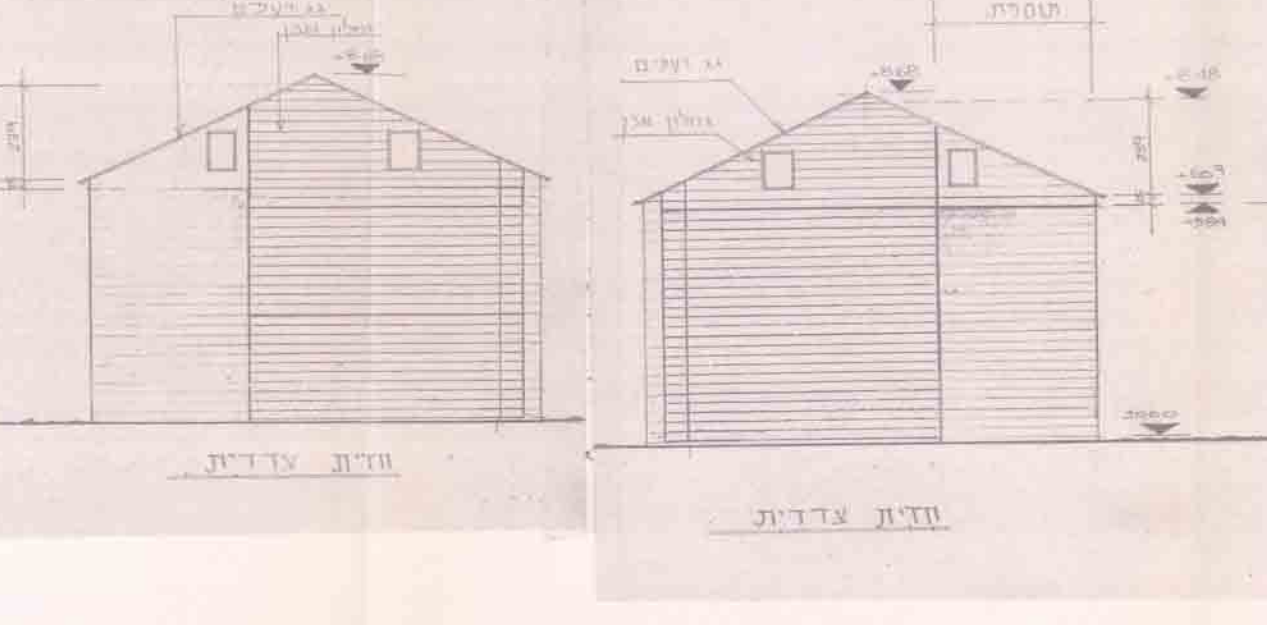
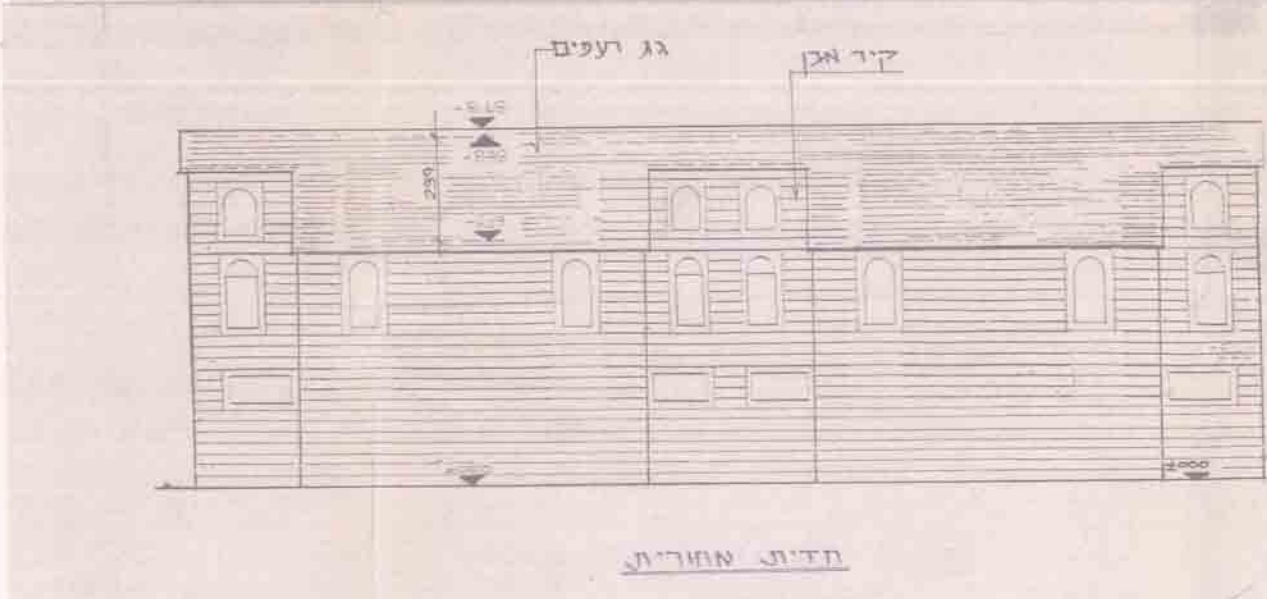
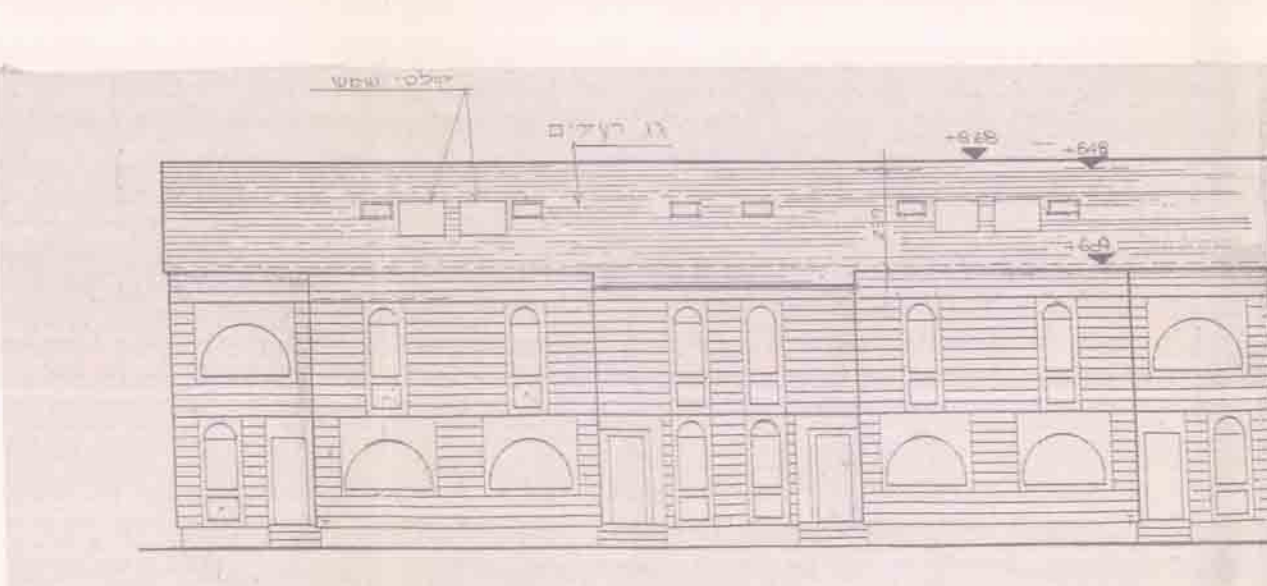
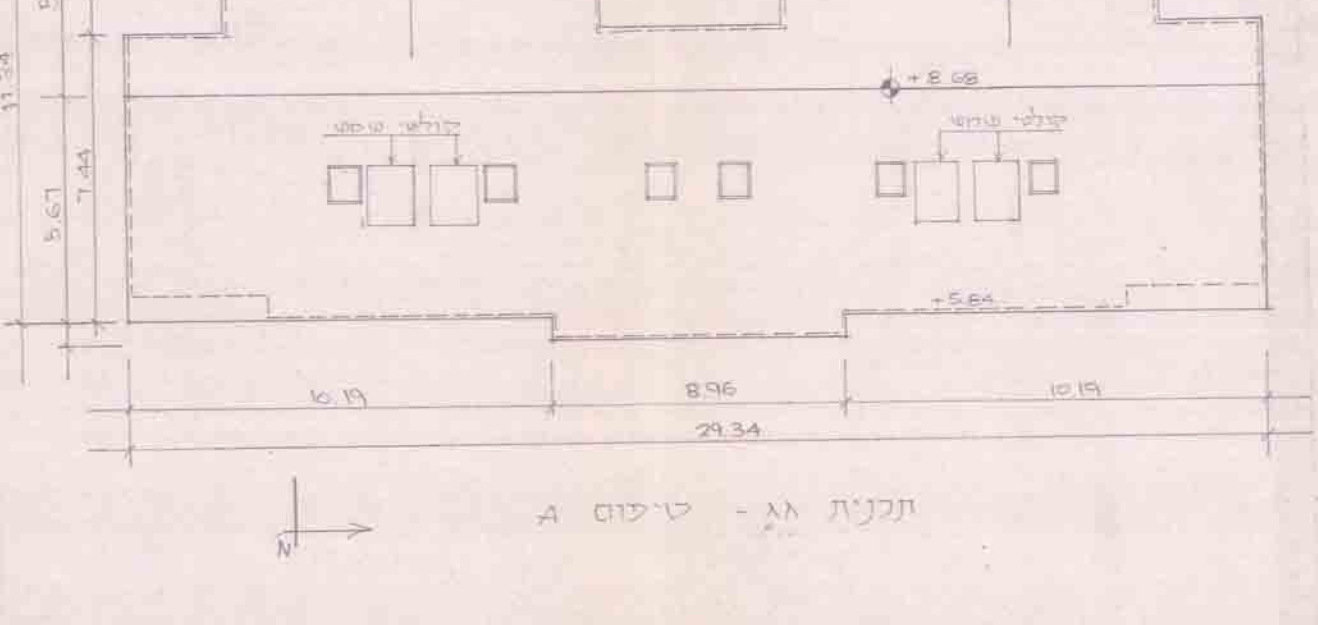
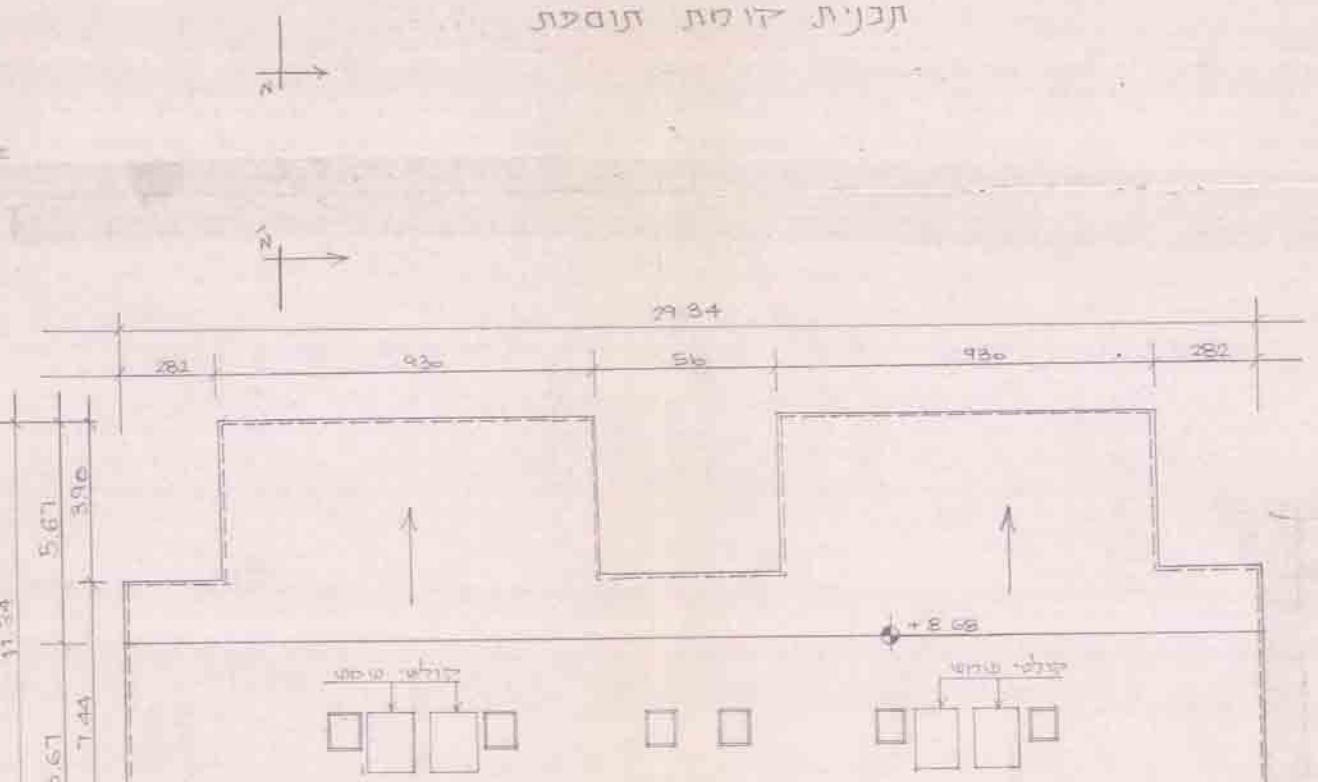
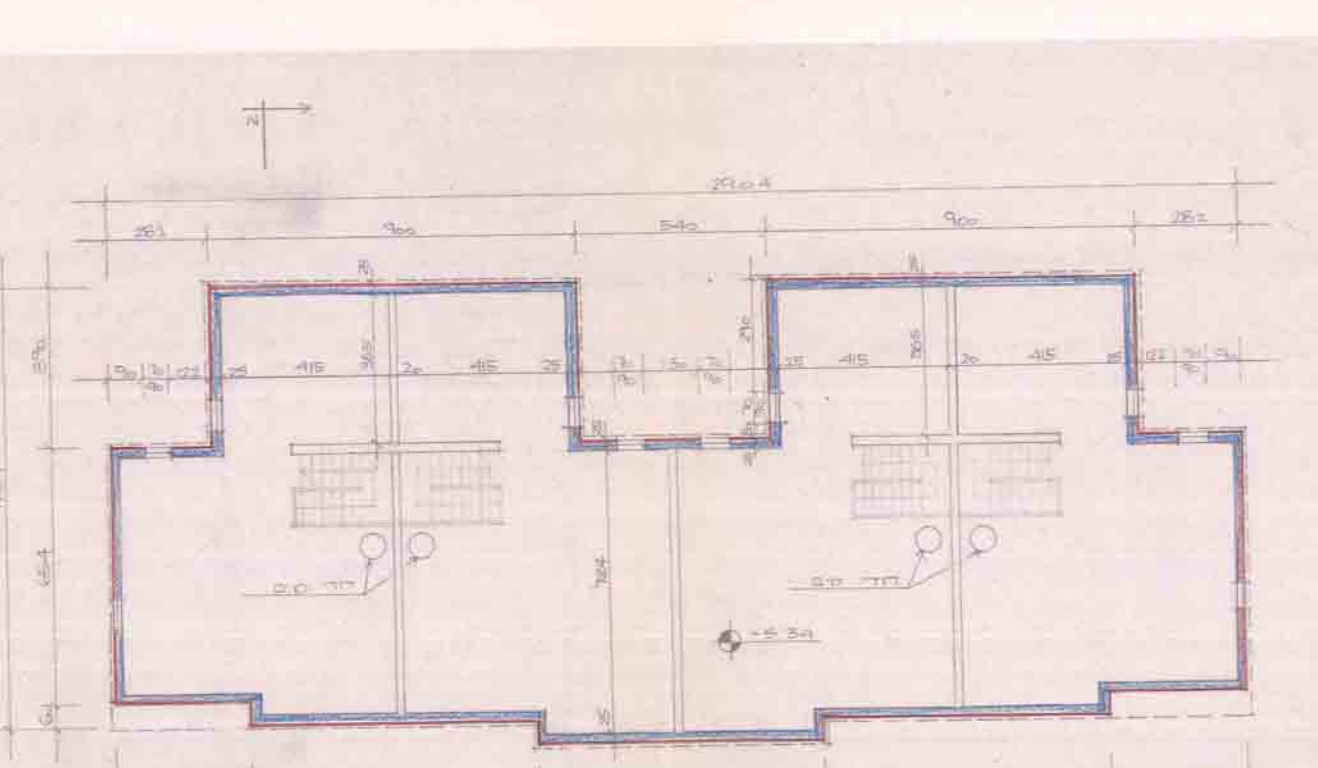
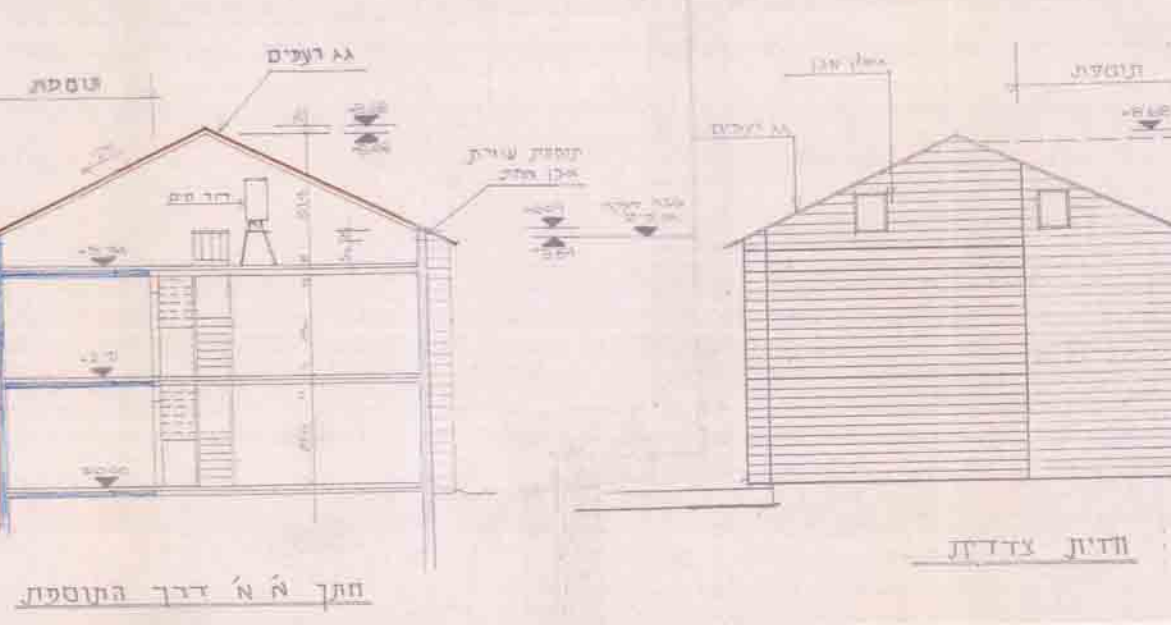
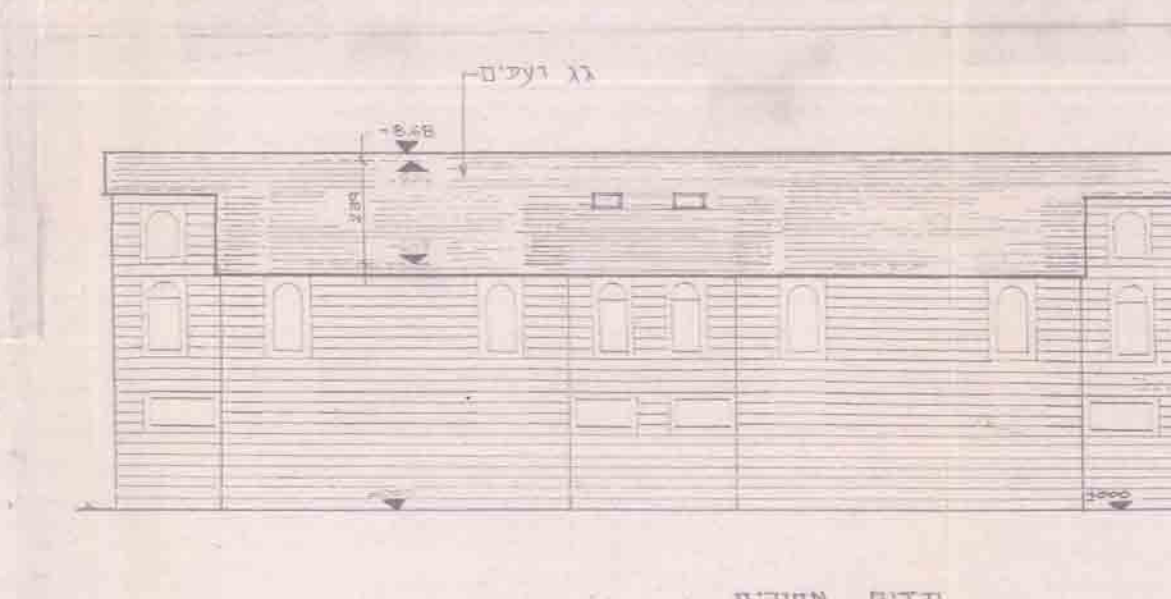
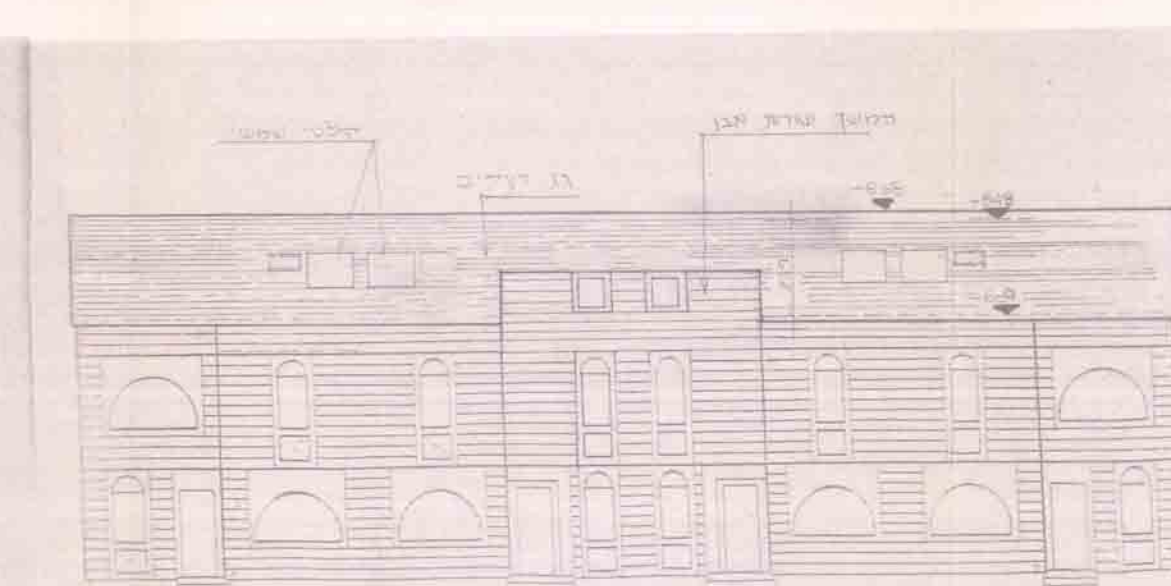
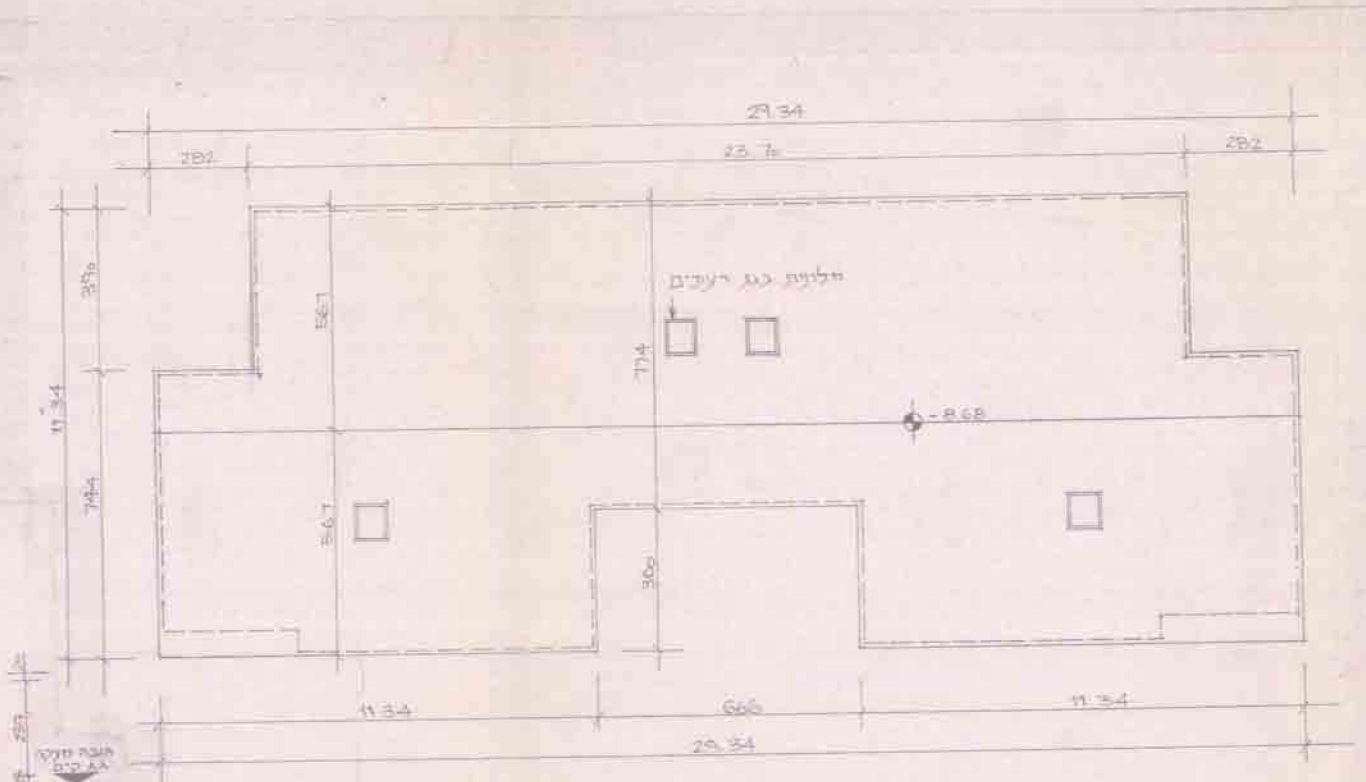
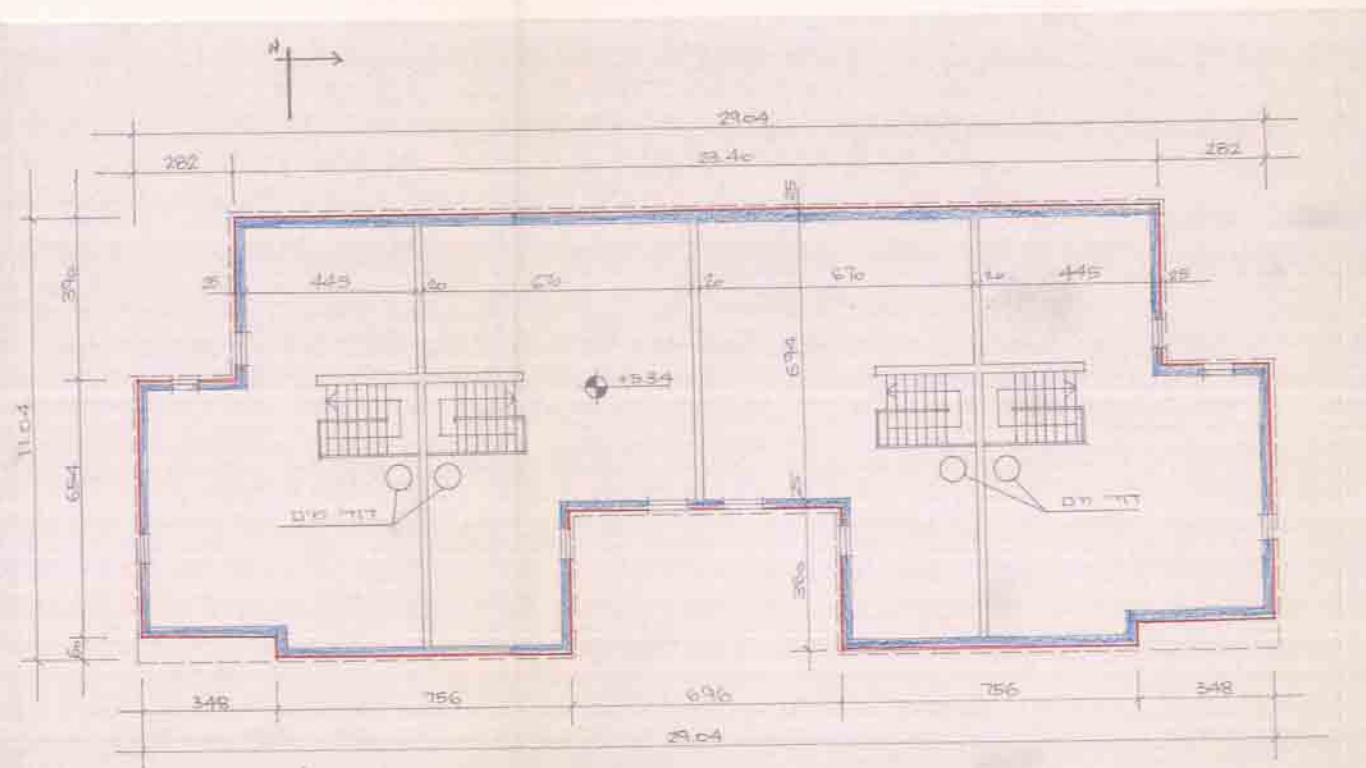
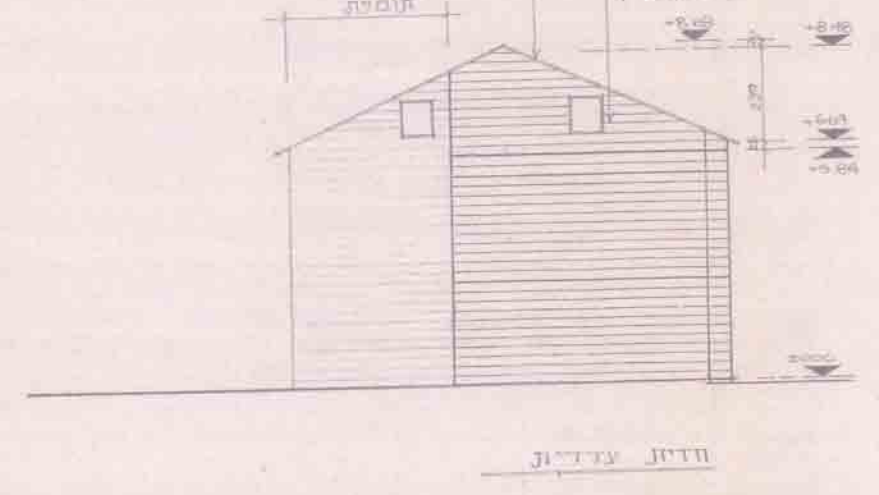
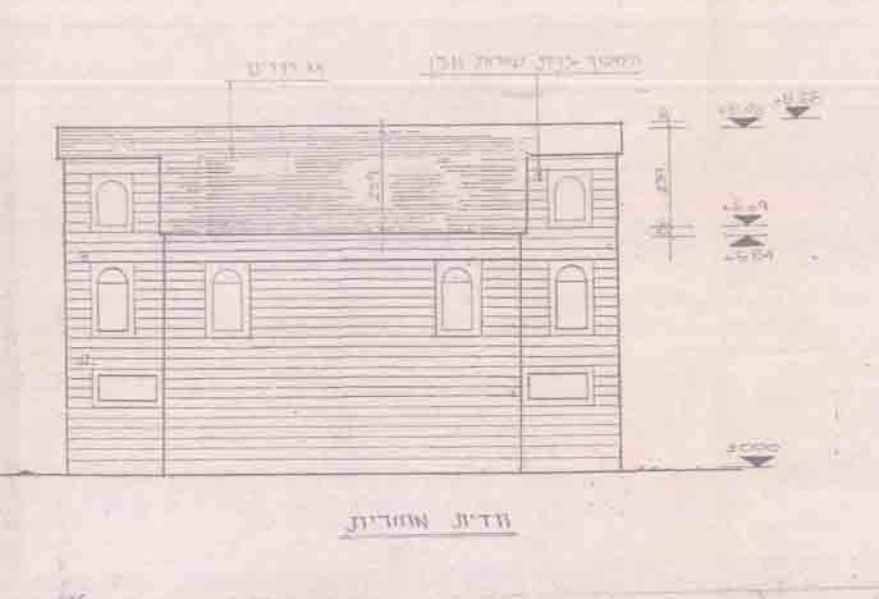
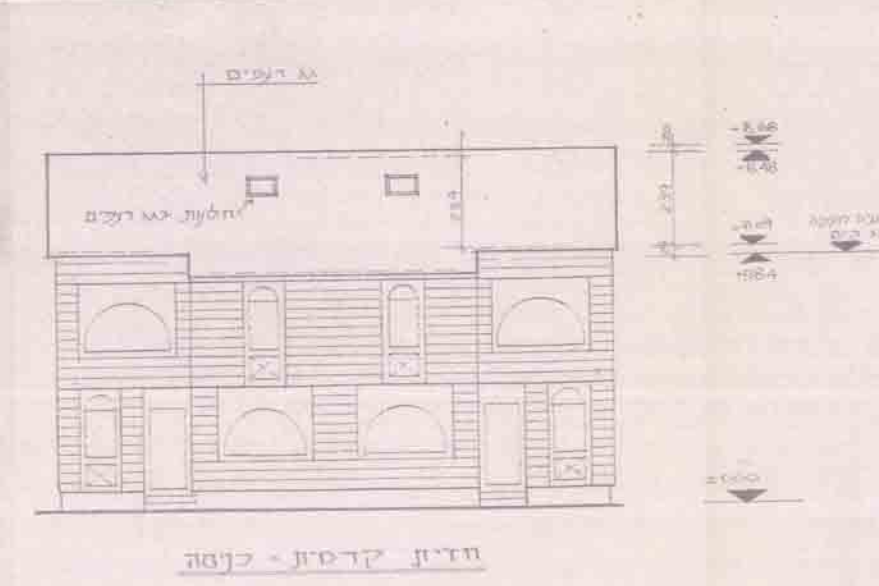
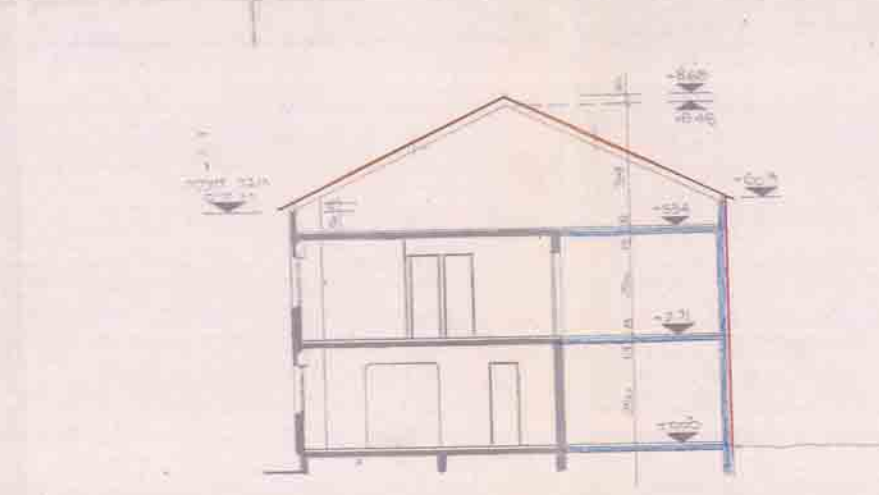
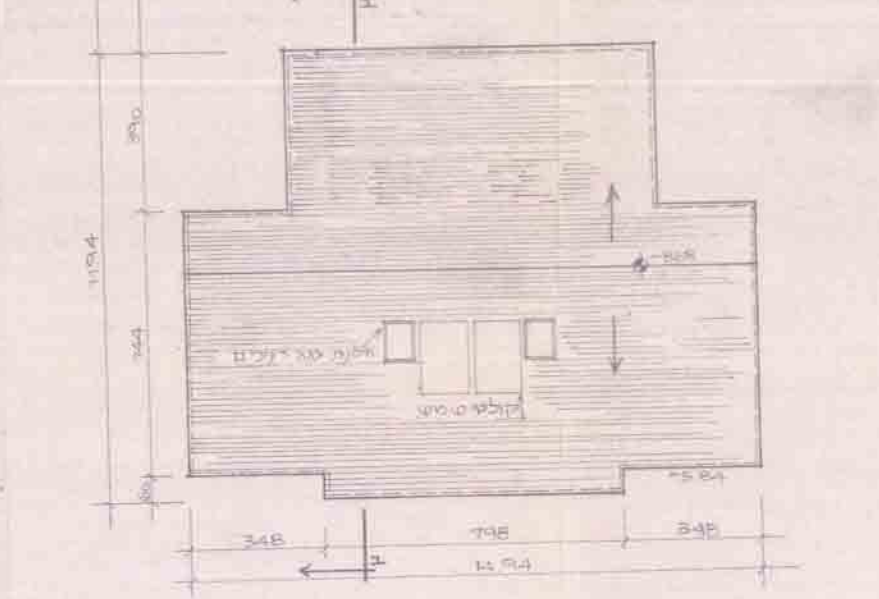
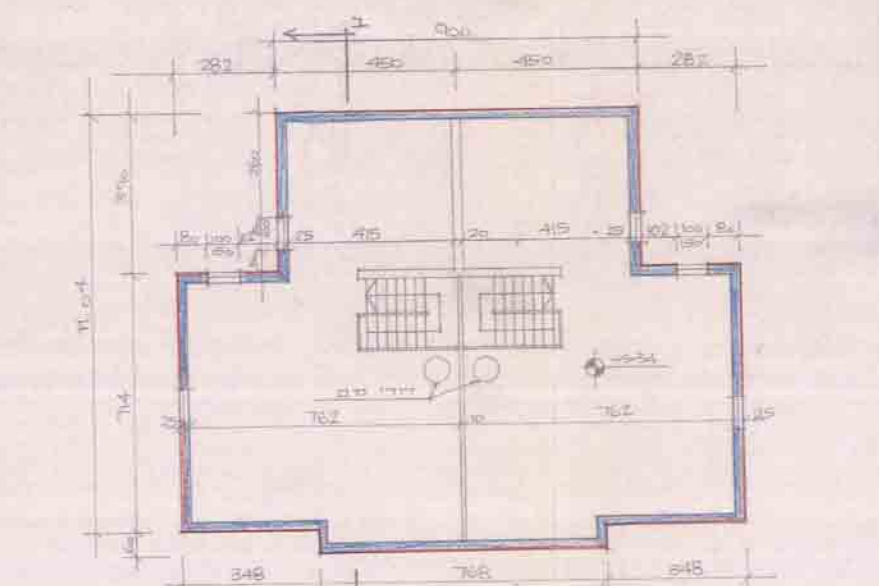
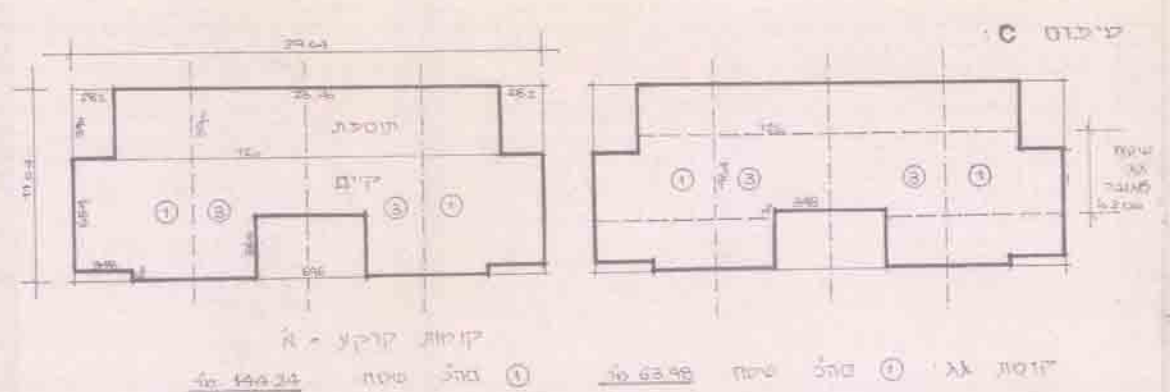
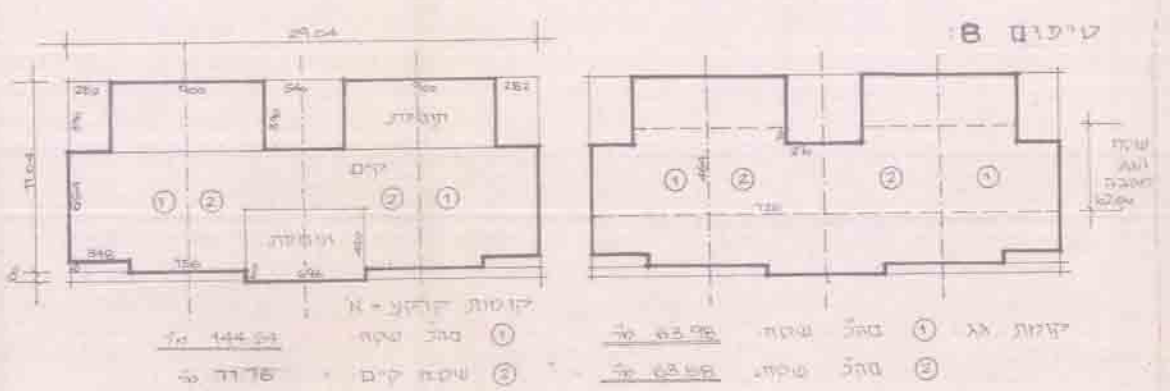
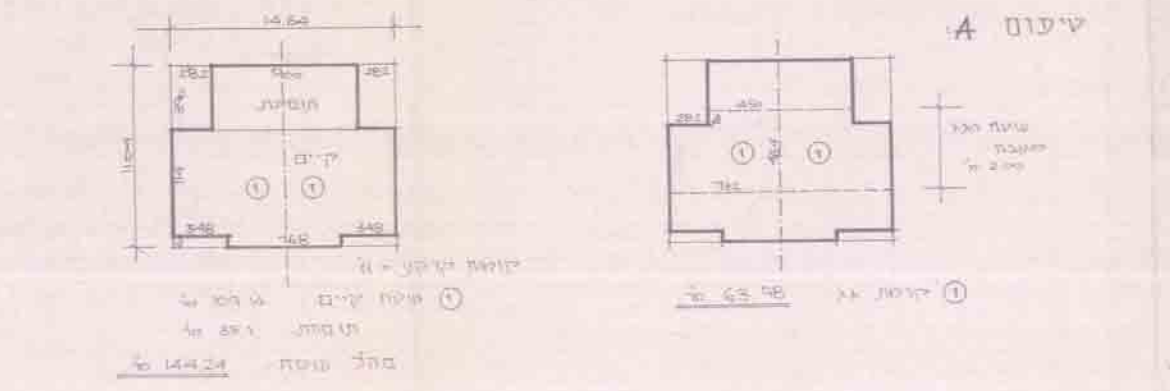
תכנית מפורטת מס' 420/1/4  
שינוי מס' 11 לתכנית מפורטת מס' 420/1/4  
נספח מס' 1  
קב"מ: 1:100  
תאריך: ספטמבר 1995

מקרא  
בטון -   
אבן - 



התוכנית נכנסה לתוקף ביום 10.10.95  
התוכנית נכנסה לתוקף ביום 10.10.95  
התוכנית נכנסה לתוקף ביום 10.10.95  
התוכנית נכנסה לתוקף ביום 10.10.95

## חישוב שטחים 1:250



4 הערה: שטח מניחים לשיטת יו"ד.