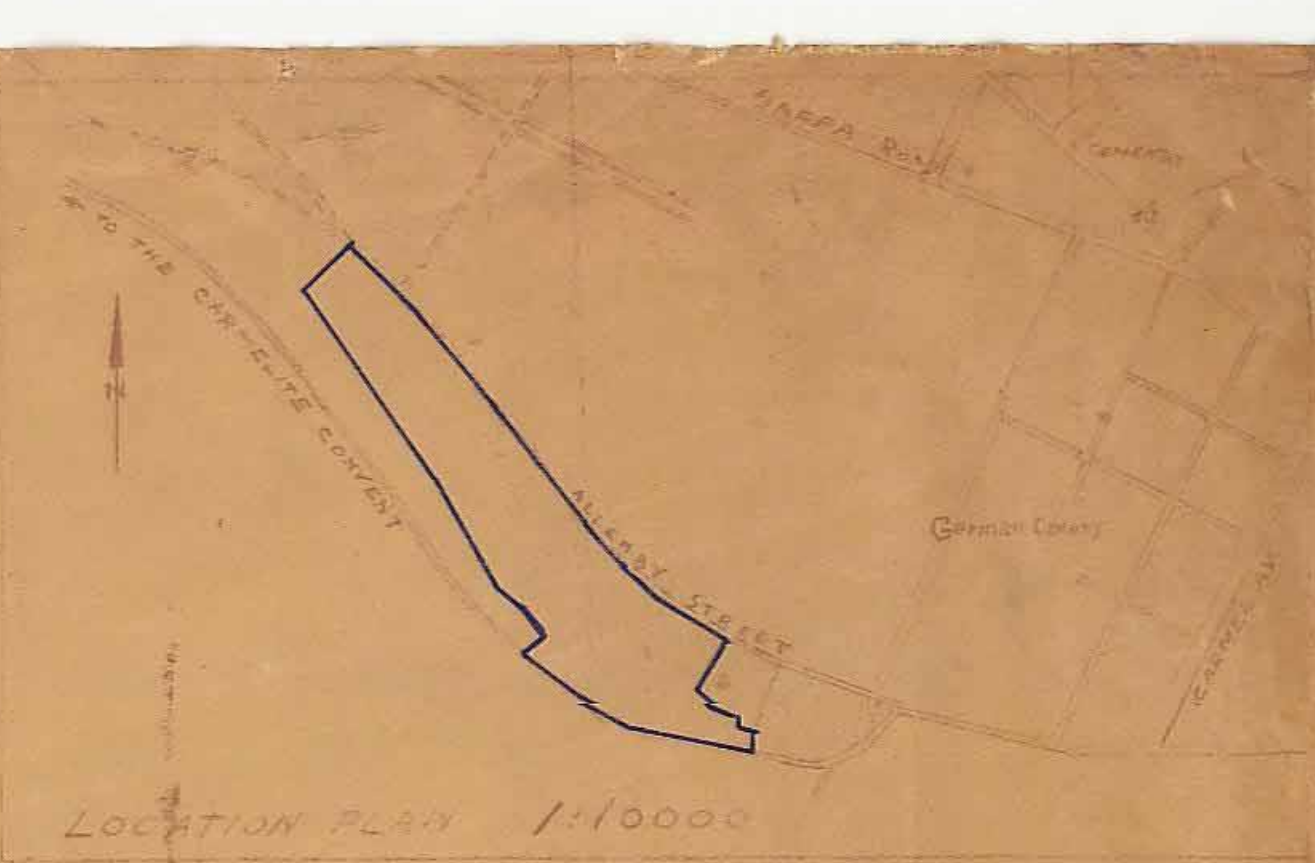


TOWN PLANNING SCHEME No 307
NORTHERN DISTRICT
WEST HAIFA-OLIVE GROVES

SCALE 1/10000

DISTRICT BUILDING AND TOWN PLANNING COMMISSION
HAIFA AND SAMARIA DISTRICT
District Serial No. of Plan 307/26
District File No. 27/266



LEGEND

TOWN PLANNING BOUNDARY	[Blue line]	
NEW STREETS	[Orange line]	
PROPOSED WIDENINGS	[Light orange line]	
EXISTING ROADS	[Dark orange line]	
BOUNDARIES OF APPROVED SCHEMES	[Dashed line]	
RESIDENTIAL B	[White square]	
SHOPS FRONTAGES	[Purple square]	
PUBLIC OPEN SPACE	[Green hatched square]	
PRIVATE OPEN SPACE	[Light green square]	
PREScribed FRONT SET BACK	[White square]	
PUBLIC BUILDINGS	[Black hatched square]	
AREAS UNDER BUILDING RESTRICTIONS	[Diagonal hatched square]	

1. AREA OF SCHEME	116,000	Sq. M.
2. AREA OF VARIOUS OWNERS INCLUDED IN THIS SCHEME	100,000	"
3. ROADS	18,250	"
4. PUBLIC OPEN SPACES	4,250	"
5. PRIVATE OPEN SPACES	2,000	"
6. PUBLIC BUILDINGS	3,100	"

HAIFA LOCAL TOWN PLANNING COMMISSION
APPROVED ON 12-1-38
FOR ENACTMENT
SCHEME No 307

NORTHERN DISTRICT TOWN PLANNING COMMISSION
PROVISIONAL APPROVAL

Scheme No 307 Passed for Publication
at the 6th meeting of the Commission
held on 2.2.37

HAIFA AND SAMARIA DISTRICT T.P.C.
Meeting No. 16 Date 1.2.38
FINALLY APPROVED SCHEME