

MUNICIPAL CORPORATION OF HAIFA.  
**PROPOSED RE-ALIGNMENT OF KEITH-ROACH AVENUE**

SCALE = 1:1000.  
 TOWN PLANNING SCHEME No 566

DISTRICT BUILDING  
 AND  
 TOWN PLANNING COMMISSION  
 HAIFA AND SAMARIA DISTRICT  
 District Serial No. of Plan HA/183  
 District File No. 271/409

- LEGEND**
- RESIDENTIAL A
  - SHOP FRONTAGE
  - APPROVED ROADS
  - EXISTING ROADS
  - PROPOSED MEDIUM
  - PRESCRIBED SET-BACKS
  - WIDTH OF ROAD
  - WIDTH OF ROAD
  - BUILDING LINES
  - PROPOSED PUBLIC OPEN SPACE
  - BOUNDARY OF APPROVED SCHEME
  - BOUNDARY OF SCHEME
  - ROADS TO BE STOPPED UP
  - ELEVATED SIDEWALK
  - PLOTS UNDER BUILDING RESTRICTION



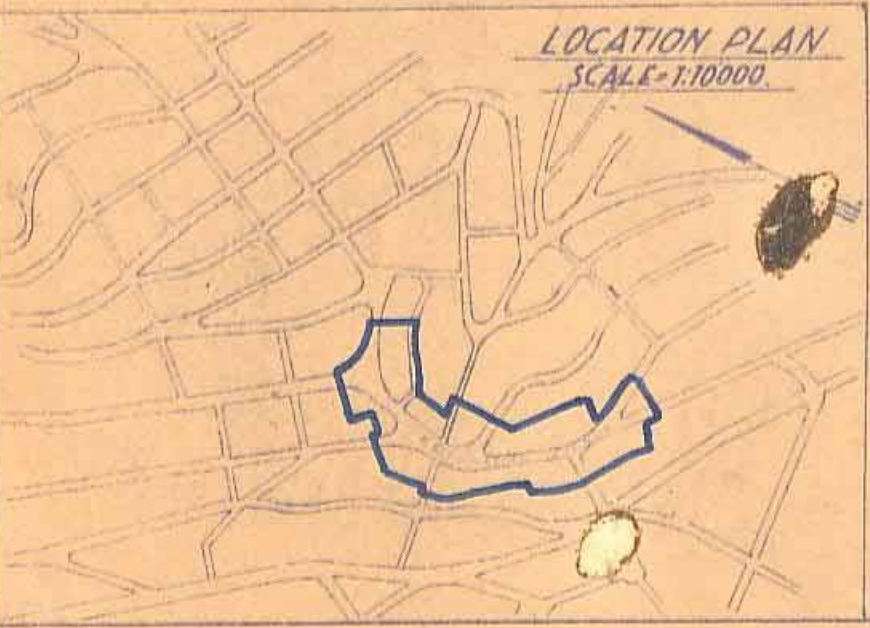
AREA OF SCHEME: 44600 m.

HAIFA AND SAMARIA DISTRICT  
 TOWN PLANNING COMMISSION  
 PROVISIONAL APPROVAL  
 Scheme No. 566 Passed for Publication  
 at the 27th meeting of the  
 Commission held on 11.12.39  
 (Sgd) H. Kendall Adoier (Sgd) H. Dolev Chairman

APPROVED ON 12/4/39  
 TOWN PLANNING COMMISSION  
 SCHEME No 566  
 (Sgd) H. Dolev Chairman (Sgd) H. Kendall Adoier

DETERRMENT TAX MAY BE RECOVERED IN  
 RESPECT OF THIS SCHEME IN ACCORDANCE  
 WITH THE PROVISIONS OF SECTION 52 OF  
 THE TOWN PLANNING ACT 1929

HAIFA AND SAMARIA DISTRICT T.P.C.  
 Meeting No. 29 Date 2.5.39  
**FINALLY APPROVED SCHEME**  
 (Sgd) H. Dolev Chairman (Sgd) H. Kendall Adoier



MUNICIPAL CORPORATION OF HAIFA ENGINEERING DEPARTMENT	
TOWN PLANNING SECTION	
PROPOSED MODIFICATION TO N. 112 CARMEL RD. 110	
SCALE	1:1000
Drawn by	E.S.A.L.R.
Checked by	E.S.A.L.R.
Project No.	7389
<b>566</b>	