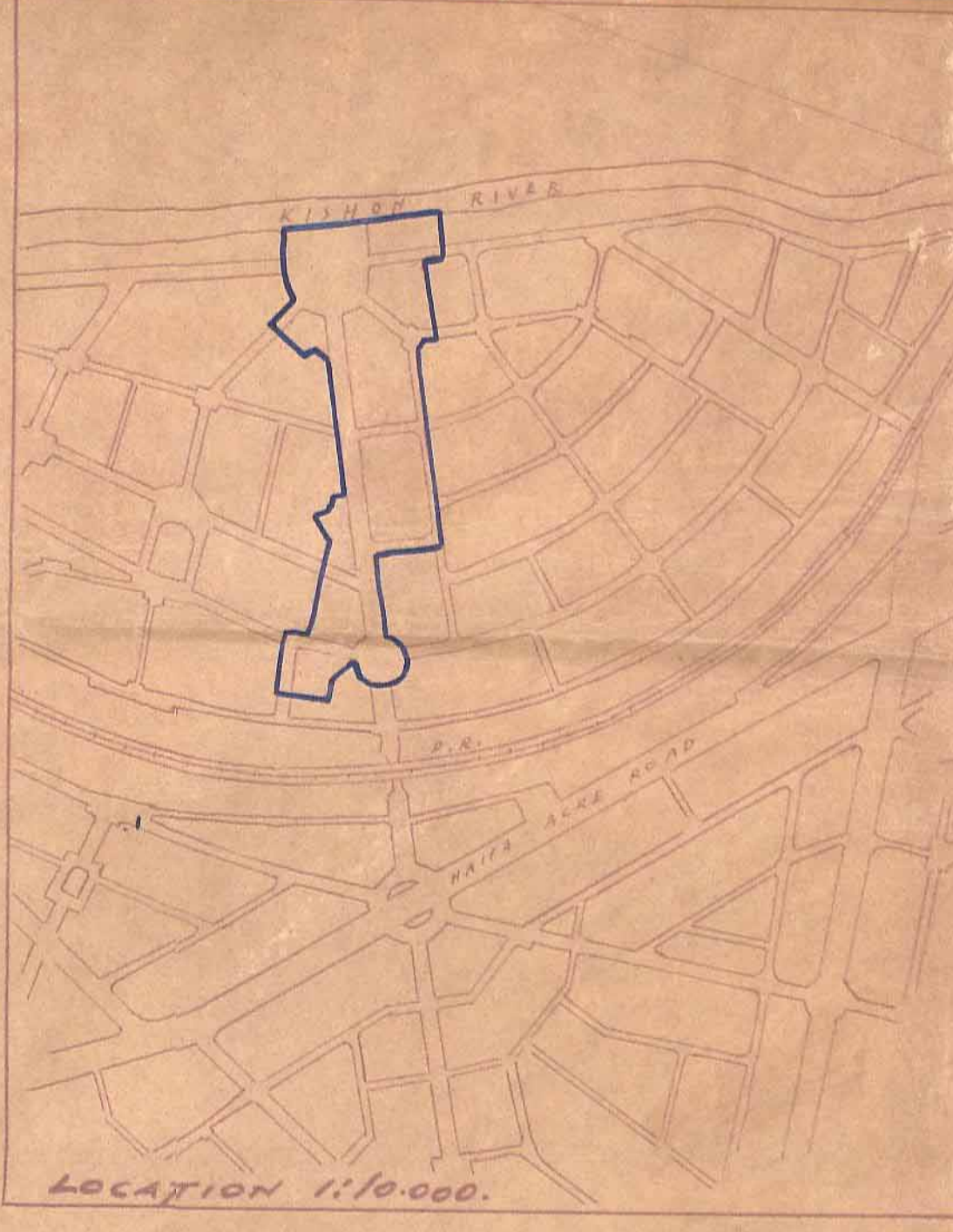


**DISTRICT BUILDING AND TOWN PLANNING COMMISSION**  
 HAIFA DISTRICT  
 District Serial No. of Plan... H.A. 1180  
 District File No. ... 406

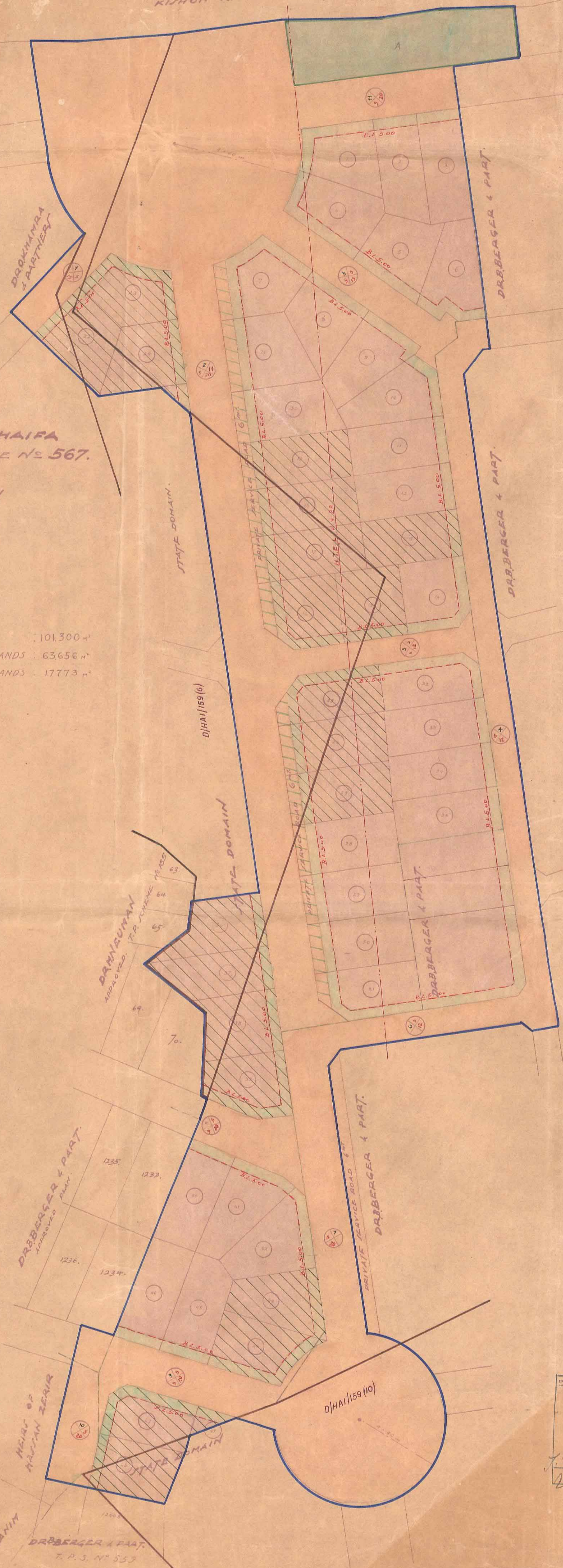
PLAN ATTACHED TO HAIFA TOWN PLANNING SCHEME No. 567.  
 SOUTH KISHON AXIAL ROAD PARCELLATION  
 SCALE 1/1000  
 PROMOTERS: P.L.D.C.

AREA OF SCHEME : 101,300 m<sup>2</sup>  
 AREA OF PROMOTER'S LANDS : 63,656 m<sup>2</sup>  
 ROADS IN PROMOTER'S LANDS : 17,773 m<sup>2</sup>



- LEGEND**
- BOUNDARY OF SCHEME
  - NEW STREET
  - NUMBER OF ROAD
  - BUILDING LINES
  - WIDTH OF ROAD
  - LIGHT INDUSTRIAL
  - PRIVATE OPEN SPACE
  - FRONT SET-BACKS
  - BOUNDARY OF PROPERTY
  - PLOTS UNDER BUILDING RESTRICTIONS
  - HIGH TENSION ELEC. LINE
  - PRIVATE SERVICE ROAD
  - STATE DOMAIN BOUNDARY

567



**NOTICE**  
 Have you studied the provisions of the scheme? Do they permit you to erect a building and to use the land now, and under what conditions?

*[Signature]*  
 A. Ashkel

**TOWN PLANNING ORDINANCE, 1936.**  
 Haifa TOWN PLANNING AREA.  
 Parcelation Scheme No. 567  
 The District Commission, at its... meeting held on the... day of... resolved to deposit the above scheme into force.  
 H. Rendall, Chairman  
 T. S. Seivener, Haifa District Building and Town Planning Commission

**TOWN PLANNING ORDINANCE, 1936.**  
 Haifa TOWN PLANNING AREA.  
 Parcelation Scheme No. 567  
 The District Commission, at its... meeting held on the... day of... resolved to deposit the above scheme.  
 G. N. Orison, Chairman  
 Haifa District Building and Town Planning Commission

**HAIFA LOCAL BUILDING & TOWN PLANNING COMMISSION**  
 H. T. P. SCHEME No. 567  
 RECOMMENDED TO BE PUT INTO FORCE AT THE 80<sup>th</sup> MEETING ON 16.5.44.  
 J. P. P. City Engineer  
 Chairman L.B. & T.P.C.

**HAIFA LOCAL TOWN PLANNING COMMISSION**  
 APPROVED ON 15-#-39 FOR PROVISIONAL APPROVAL BY D.T.P.C. SCHEME No. 567  
 J. P. P. City Engineer  
 Chairman L.B. & T.P.C.

*[Signature]*  
 A. Ashkel