

HAIFA TOWN PLANNING SCHEME N. 62 תכנית בנין ערים חיפה נ. 62

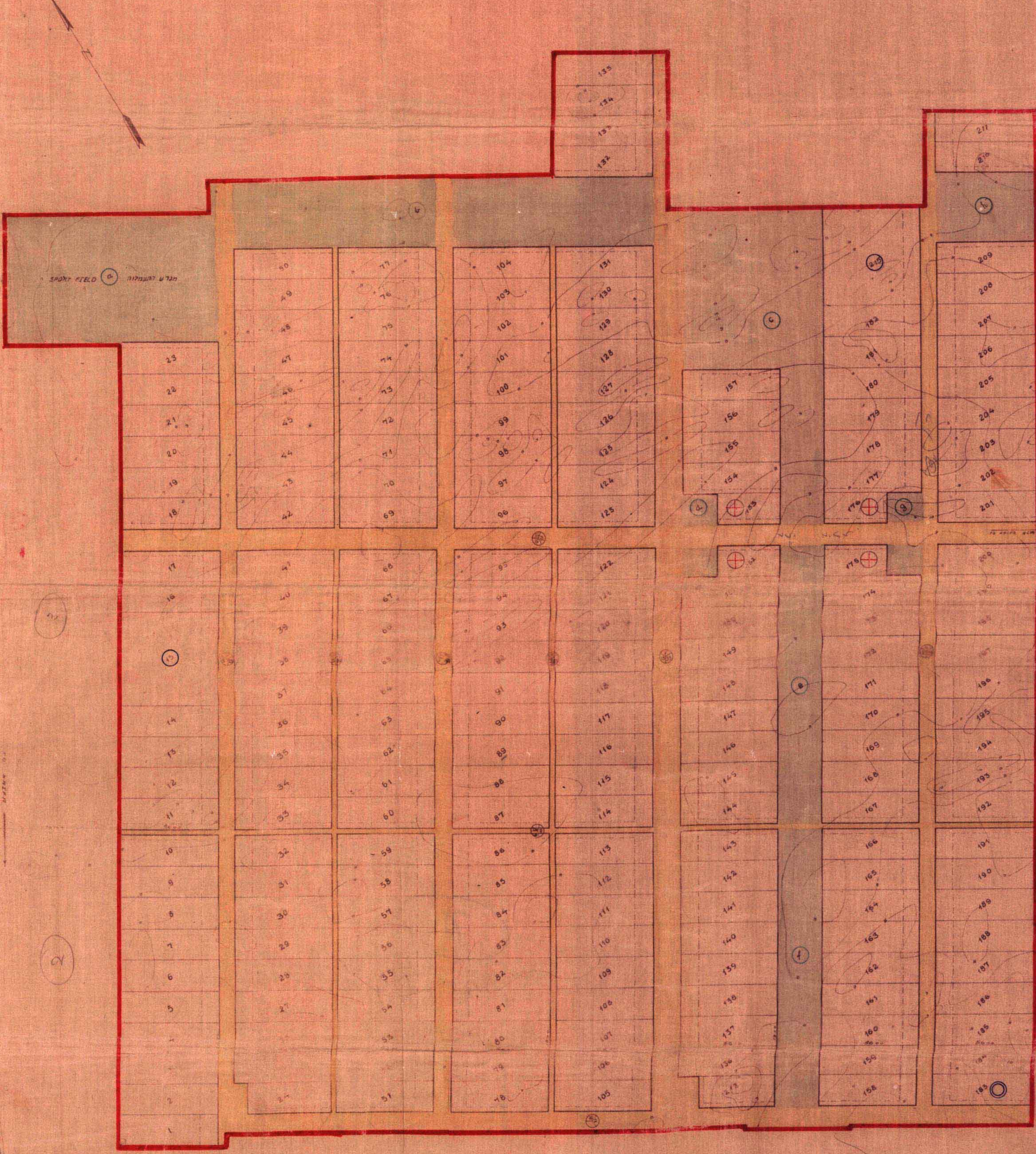
WORKERS SUBURB HAIFA BAY

שכונת עובדים בחוף חיפה

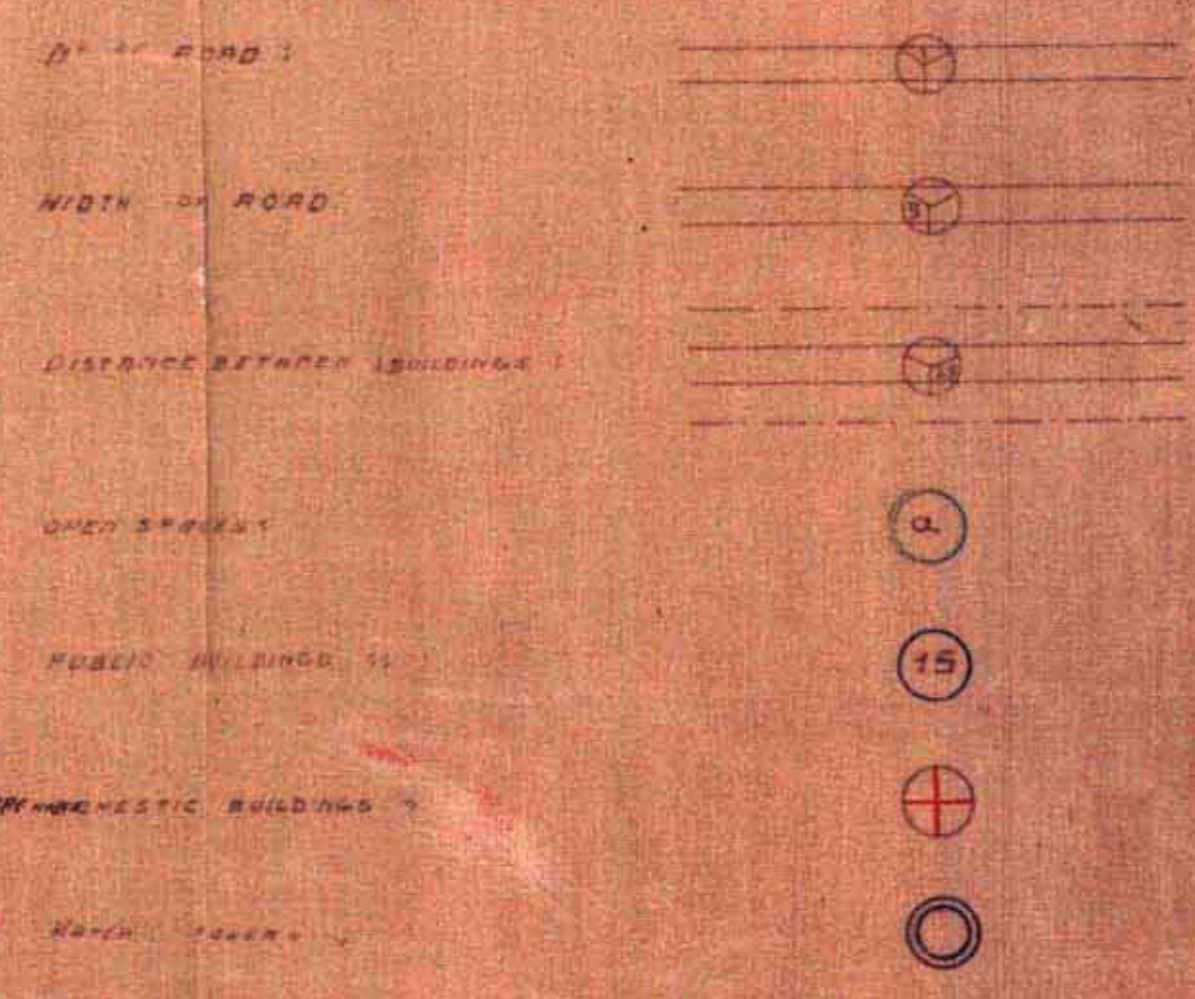
SCALE 1:1000

AREA TABLE לוח השטחים

TOTAL AREA		NO.	TOTAL AREA		NO.
מ"ר	ק"מ		מ"ר	ק"מ	
1	008.00	113	1	008.00	1
1	007.00	114	1	008.00	2
1	007.00	115	1	008.00	3
1	008.00	116	1	008.00	4
1	007.00	117	1	008.00	5
1	007.00	118	1	008.00	6
1	007.00	119	1	008.00	7
1	007.00	120	1	008.00	8
1	007.00	121	1	008.00	9
1	009.00	122	1	008.00	10
1	009.00	123	1	010.00	11
1	007.00	124	1	008.00	12
1	012.00	125	1	011.00	13
1	010.00	126	1	010.00	14
1	007.00	127	3	008.00	15
1	010.00	128	1	007.00	16
1	011.00	129	1	012.00	17
1	010.00	130	1	008.00	18
1	009.00	131	1	009.00	19
1	009.00	132	1	010.00	20
1	009.00	133	1	009.00	21
1	007.00	134	1	007.00	22
1	007.00	135	1	010.00	23
1	014.00	136	1	008.00	24
1	007.00	137	1	007.00	25
1	007.00	138	1	008.00	26
1	008.00	139	1	008.00	27
1	008.00	140	1	008.00	28
1	008.00	141	1	011.00	29
1	008.00	142	1	008.00	30
1	008.00	143	1	007.00	31
1	007.00	144	1	004.00	32
1	008.00	145	1	007.00	33
1	007.00	146	1	007.00	34
1	007.00	147	1	008.00	35
1	007.00	148	1	007.00	36
1	007.00	149	1	007.00	37
1	007.00	150	1	008.00	38
1	007.00	151	1	007.00	39
1	008.00	152	1	007.00	40
1	008.00	153	1	008.00	41
1	011.00	154	1	008.00	42
1	011.00	155	1	012.00	43
1	011.00	156	1	008.00	44
1	008.00	157	1	007.00	45
1	008.00	158	1	008.00	46
1	010.00	159	1	007.00	47
1	007.00	160	1	008.00	48
1	008.00	161	1	008.00	49
1	008.00	162	1	008.00	50
1	010.00	163	1	008.00	51
1	008.00	164	1	008.00	52
1	010.00	165	1	008.00	53
1	010.00	166	1	008.00	54
1	010.00	167	1	008.00	55
1	010.00	168	1	008.00	56
1	008.00	169	1	008.00	57
1	008.00	170	1	008.00	58
1	008.00	171	1	008.00	59
1	010.00	172	1	007.00	60
1	008.00	173	1	008.00	61
1	008.00	174	1	008.00	62
1	008.00	175	1	008.00	63
1	008.00	176	1	008.00	64
1	010.00	177	1	008.00	65
1	010.00	178	1	008.00	66
1	010.00	179	1	008.00	67
1	012.00	180	1	008.00	68
1	011.00	181	1	007.00	69
1	013.00	182	1	007.00	70
1	005.00	183	1	007.00	71
1	005.00	184	1	008.00	72
1	005.00	185	1	008.00	73
1	004.00	186	1	008.00	74
1	005.00	187	1	008.00	75
1	004.00	188	1	007.00	76
1	006.00	189	1	006.00	77
1	005.00	190	1	008.00	78
1	006.00	191	1	008.00	79
1	006.00	192	1	008.00	80
1	006.00	193	1	010.00	81
1	006.00	194	1	006.00	82
1	007.00	195	1	007.00	83
1	005.00	196	1	008.00	84
1	007.00	197	1	006.00	85
1	007.00	198	1	005.00	86
1	004.00	199	1	008.00	87
1	007.00	200	1	007.00	88
1	009.00	201	1	006.00	89
1	008.00	202	1	008.00	90
1	008.00	203	1	008.00	91
1	010.00	204	1	008.00	92
1	008.00	205	1	010.00	93
1	010.00	206	1	008.00	94
1	008.00	207	1	008.00	95
1	008.00	208	1	008.00	96
1	010.00	209	1	008.00	97
1	008.00	210	1	009.00	98
1	009.00	211	1	008.00	99
1	007.00	212	1	007.00	100
3	126.00	213	1	008.00	101
4	1597.00	OPEN SPACES	1	008.00	102
37904.00	ROADS	1	008.00	103	103
25422.00	TOTAL AREA	1	008.00	104	104
		1	008.00	105	105
		1	008.00	106	106
		1	008.00	107	107
		1	008.00	108	108
		1	008.00	109	109
		1	008.00	110	110
		1	008.00	111	111
		1	008.00	112	112



REFERENCE



פסגת הרחוב
 קווי הרחוב
 קווי בנין הבניינים
 שטחים פתוחים
 בניינים פתוחים
 בניינים

CENTRAL TOWN PLANNING COMMISSION
 Scheme finally approved and ordered to be published in the Gazette.
 Date: *Arthur Blaukopf*
 High Commissioner

HAIFA
 LOCAL TOWN PLANNING COMMISSION
 SCHEME NO. 62. APPROVED
 SEP. L. ANDREWS, Chairman
 MEMBERS: RASHID JUNKAI, ASHRAF KHALIL, ISHAK KHALIL, ISHAK KHALIL
 MEMBERS: ISHAK KHALIL, ABRAHAM MURRAY, ISHAK KHALIL