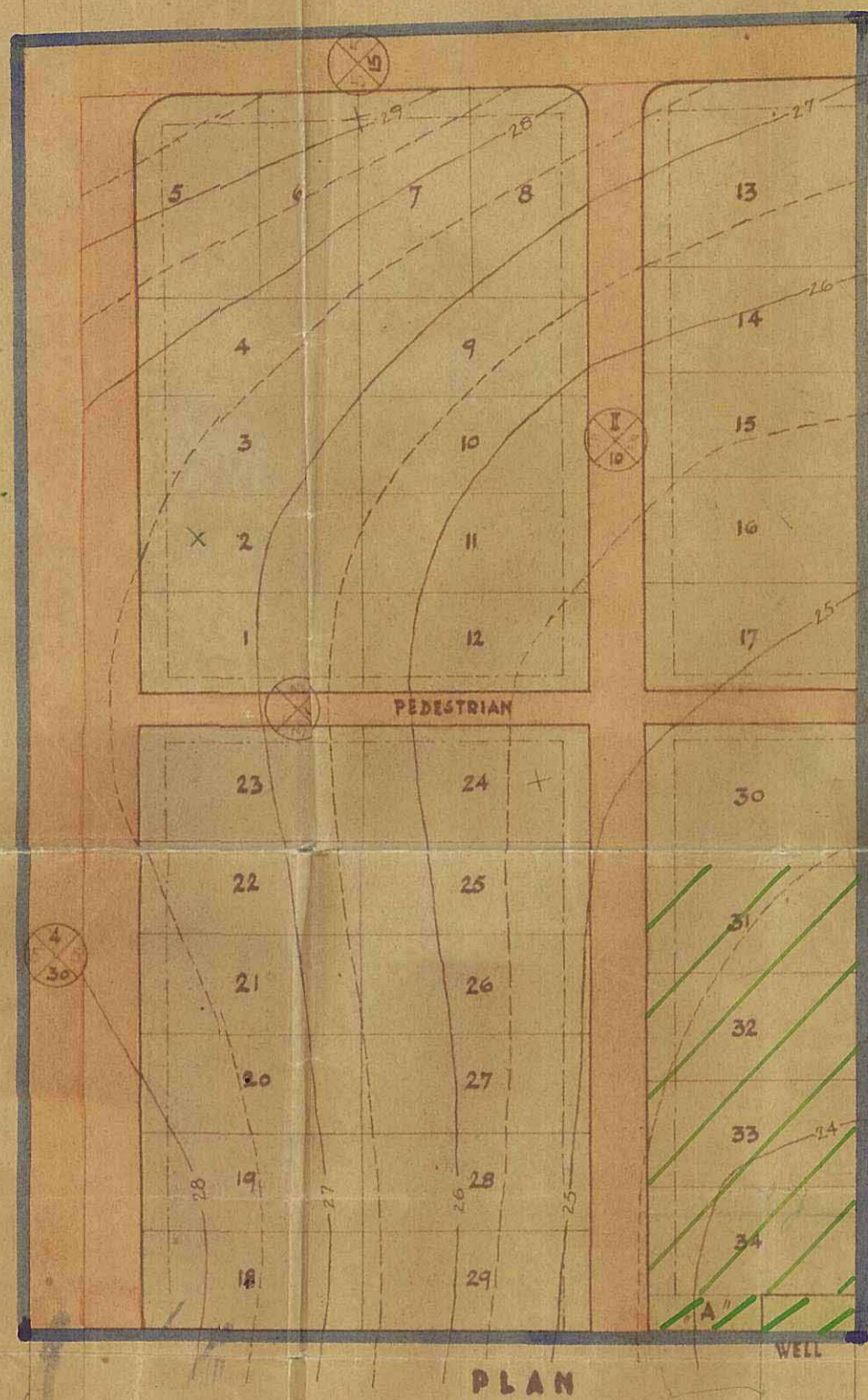


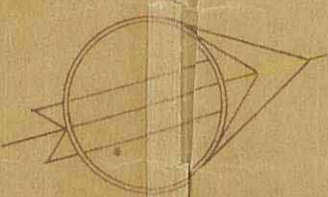
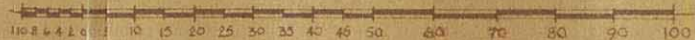
NATHANYA TOWN PLANNING AREA PLAN OF DETAILED TOWN PLANNING SCHEME N° 288

PROMOTED BY : SHIKUN AMAMI
BLOCK N° 8260 PARCEL N° 13



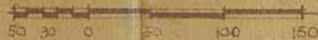
PLAN

SCALE 1:1250



KEY PLAN

SCALE 1:5000



SCHEDULE OF AREAS				
	Parcel	Area	Sub Total	Total
Original	P/8260	31.044		31.944
New Parcels N°	1-4	750	3.000	
	5	780	780	
	6-7	750	1.500	
	8	815	815	
	9-12	750	3.000	
	13	1.233	1.233	
	14-17	750	3.000	
	18-22	750	3.750	
	23-24	870	1.752	
	25-29	750	3.750	
	30	933	933	
	31-34	750	3.000	
P.O.S. 'A'		141	141	
Roads & Paths		5.289		5.289
Total				31.944

LEGEND :

- SCHEME BOUNDARY
- EXISTING ROADS
- NEW STREETS
- PROPOSED WIDENINGS
- NOTATION OF ROADS :
 - NUMBER OF ROAD
 - WIDTH OF ROAD
 - BUILDING LINES
- RESIDENTIAL ZONE 'A'
- PROPOSED PUBLIC OPEN SPACES
- LANDS FOR EXCHANGE FOR PUBLIC OPEN SPACES

חברה לטיכוד עממי - תל-אביב

PROMOTOR:

DESIGNER:

DATE: 12 AUG. 1945

OFFICIAL STAMPS:

NATHANYA LOCAL TOWN PLANNING COMMISSION

Scheme passed to District Commission for provisional approval at the 40th meeting held on 22nd August 1945
11th Sep 1945
Chairman

TOWN PLANNING ORDINANCE, 1936.
NATHANYA TOWN PLANNING AREA.
Detailed Scheme No. 288
The District Commission, at its meeting held on the 18th day of 24th 1945, resolved to deposit the above scheme.

Chairman
Town Planning Adviser and Town Planning Commission

TOWN PLANNING ORDINANCE, 1936.
NATHANYA TOWN PLANNING AREA.
Detailed Scheme No. 288
The District Commission, at its meeting held on the 14th day of 27th 1945, resolved to grant authority to put the above scheme into force.

Chairman
Samaris District Building and Town Planning Commission