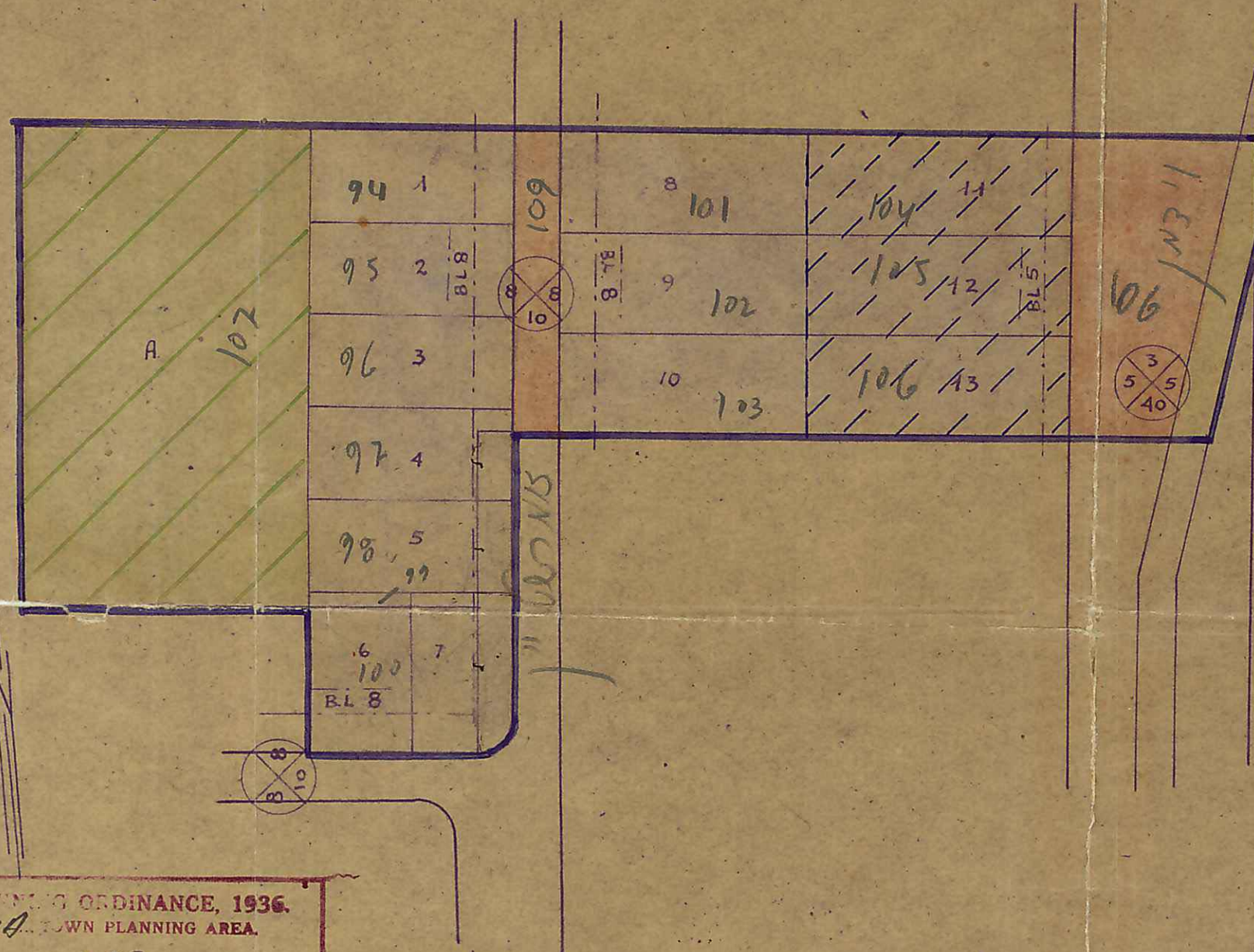


NATHANYA TOWN PLANNING AREA PLAN OF DETAILED SCHEME No 287

PROMOTER: A. HEZRONI & I. PUXON
PARCEL 36 BLOCK 8273

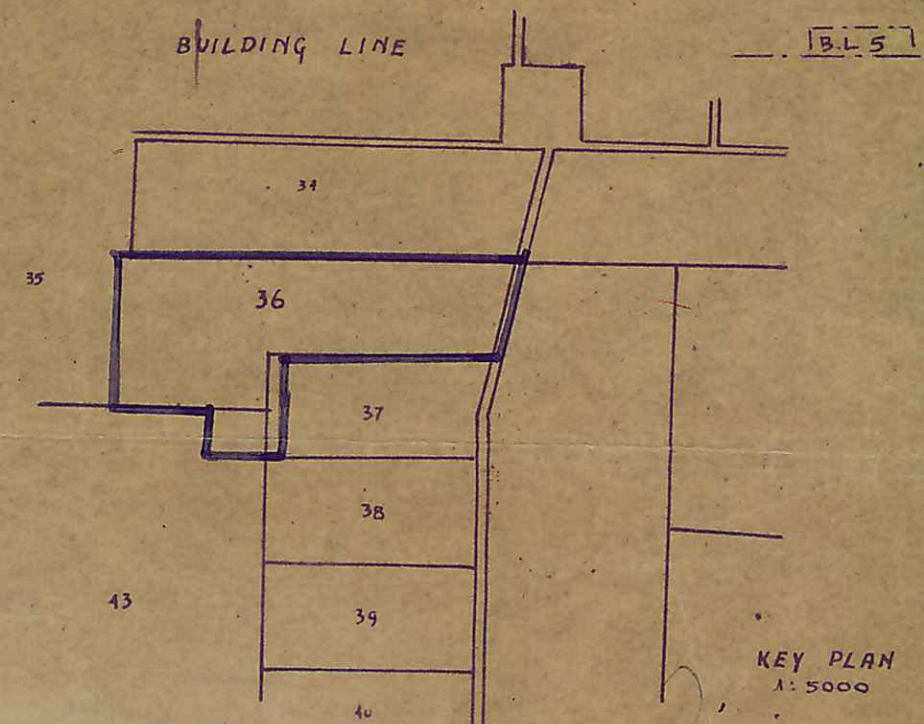
Scale 1:1250



SCHEDULE OF AREAS			
	PARCEL	AREA	TOTAL
ORIGINAL	8273/36	19936	
	FROM 8273/37	487	
	8273/45	1158	21581
NEW PARCELS	1 - 5	860	
	6 - 7	750	
	8 - 10	1000	
	11 - 12	1332	12796
P.O.S	A	6262	
ROADS		2523	8785
TOTAL			21581

LEGEND

- BOUNDARY OF SCHEME
- EXISTING ROADS
- PROPOSED ROADS
- RESIDENTIAL ZONE B
- RESIDENTIAL ZONE B₁ (DOMESTIC)
- PUBLIC OPEN SPACE
- BUILDING LINE



TOWN PLANNING ORDINANCE, 1936.
NATHANYA TOWN PLANNING AREA.
Detailed Scheme No. 287
The District Commission, at its 27th meeting held on 4th day of July 1946 resolved to grant authority to put the above scheme into force.
M. Kendall, Chairman
Samarita District Building and Town Planning Commission.

NATHANYA LOCAL TOWN PLANNING COMMISSION
Scheme passed to District Commission for provisional approval at the 40th meeting held on 22nd August 1945
11th Sep 1945
M. Kendall, Chairman

TOWN PLANNING ORDINANCE, 1936.
NATHANYA TOWN PLANNING AREA.
Detailed Scheme No. 287
The District Commission, at its 24th meeting held on the 18th day of October 1945 resolved to deposit the above scheme.
M. Kendall, Chairman
Samarita District Building and Town Planning Commission.

OWNER: _____
DESIGNER: _____
DATE: 20.6.45